



NEWINGTON  
LONDON

1 Bedrooms

Apartment

Located in London

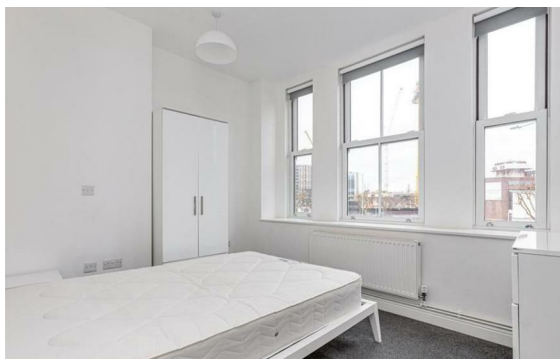
£595 Per Month



info@newingtonstates.com

<http://www.newingtonstates.com>

020 7724 2233



# NEWINGTON

## LONDON

60 Upper Montagu Street

London

W1H 1SN

020 7724 2233

[info@newingtonstates.com](mailto:info@newingtonstates.com)

This spacious recently refurbished one-bedroom apartment is located on the third floor of this extremely popular purpose-built block. The accommodation comprises of a large reception room, fully fitted kitchen, double bedroom and modern bathroom. Added benefits include 24 hour concierge, lifts and communal gardens.

Devonport is brilliantly located just a short walk from Paddington Station, Marble Arch Tube Station, Oxford Street and the open spaces of Hyde Park.

EPC rating: D

### Energy Efficiency Rating: D

Agents Note: Whilst every care has been taken to prepare these particulars, they are for guidance purposes only. All measurements are approximate and are for general guidance purposes only and whilst every care has been taken to ensure their accuracy, they should not be relied upon and potential buyers/tenants are advised to recheck the measurements.

<http://www.newingtonstates.com>